

Fonteverde is an exclusive resort set around a 17th century portico built under Gran Duke Ferdinando I. Amid precious hot springs, this delightful resort comprises 65 rooms, 9 junior suites and 4 suites with terraces over-looking the superb Tuscan countryside.

The atmosphere is reminiscent of a Tuscan palace in former times, with quality furnishings and detailed decoration. Enjoy the natural beauty of the surrounding Val d'Orcia park and admire the rolling hills and scenic setting punctuated by olive trees and vineyards.

The hotel's spa is a multifunctional complex with the most up-to-date thermal treatments, a holistic centre and beauty centre. Signature treatments include the ancient Mediterranean spa, ayurvedic massage, reflexology and therapeutic Dhara. In addition, there are eight pools, ideal for relaxation after a busy day.



FACILITIES

Spa and fitness: 7 thermal pools, indoor and outdoor; with hydromassages, waterfall and a wonderful view of the rolling hills • Exclusive Bioaquam® circuit • One Summer swimming pool • Etruscan circuit with sauna and Turkish bath • Fitness centre and fitness walk

Dining: the elegant "Ferdinando I" restaurant offering gourmet dining à la carte and the casual "La Corte" restaurant for buffet lunch • The "Il Falconiere" bar with panoramic terrace and the "Bioaquam Café" by the thermal pool • The "Casina delle Rose" annex building for private events and film showing

LEISURE ACTIVITIES

Gourmet: truffle, pecorino cheese and "chianina steak tasting" • Wine tasting in the prestigious cellar of the Chianti area • Sienese olive oil tasting • Cookery classes

Arts & Culture: sightseeing in the charming medieval hamlets of Pienza, Cortona, Montalcino, Montepulciano or to the famous cities of arts such as Siena, Assisi, Perugia, Orvieto, Firenze, Arezzo

Wellbeing and open air activities: beside the exclusive spa treatments and the various thermal pools, the resort offers mountain biking in the surrounding countryside, trekking and horseback riding

Exclusive: vintage or Ferrari car excursions • Vespa tours • Truffle hunting with the local "tartufai" • A seat at the renowned Palio of Siena



WHY FONTEVERDE?

- Incomparable view on the sweet rolling hills of Siena
- XVIIth Century Medicean palace
- Natural hotspring spa
- Gourmet and spa cuisine
- Wine and local produce tasting
- Mountain biking, trekking and horse back riding
- Local produce shopping
- Vintage or Ferrari cars excursions
- Truffle hunting experience

PRIVATE PARTIES & EVENTS

- Wedding parties
- Celebrations & private events
- Family travel



fonteverde

The "Casina delle Rose" annex

A splendid liberty style building comes back to life after a complete restoration, in the grounds of Fonteverde Natural Spa Resort.

This is a multi-functional area with all modern technical devices allowing any type of set up for

meetings or congresses. Entirely illuminated by natural light, with large windows looking out over the Val d'Orcia, it is set on two levels with a patio facing a rose garden from which it takes its name. It is the ideal location for elegant banquets and cocktail parties and events in general. Even weddings become exclusive and private thanks to the possibility of using the Chapel in the park for the religious ceremony and the Casina delle Rose for the reception.

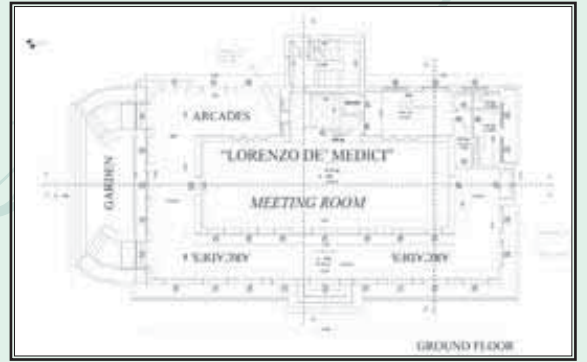


LORENZO DE' MEDICI ROOM (ground floor)

Length: m. 15,00
Width: m. 5,00
Area: mq. 75,00

LUCREZIA TORNUBUONI ROOM (1st floor)

Length: m. 15,00
Width: m. 5,00
Area: mq. 75,00



"Lorenzo de' Medici" meeting room

THEATRE	CLASSROOM	U SHAPE	BANQUETS
75	50	40	60

Technical Equipments

- Overhead Beamer
- Screen (2,50 x 2,00)
- Laser Pointer
- DVD and VHS overhead projector
- CD Player
- 4 microphones
- 3 radio microphones
- 2 LCD monitor
- BOSE Acoustic Diffusion System
- Control Space BOSE (digital audio system)
- Double recorder system

On Request

- Sound recordist and video operator
- Simultaneous translation
- Wireless Microphones
- Wardrobe
- Hostess service
- Photographer
- Computer

Cosimo I meeting room

Located in the hotel main building, the Cosimo I meeting room can accommodate up to 85 people; it is equipped with the most up-to-date technical supports and offers natural daylight. The room has heating and air conditioning individually controlled.

Cosimo II meeting room

This room is the ideal place for focus groups and can accommodate up to 20 people. It has a heating and air conditioning individually controlled, artificial light and marble floor.



Groups contact

Eleonora Bellini
tel: +39 0578 57241
eleonora.bellini@fonteverdespa.com

Number of rooms

65 rooms, 9 junior suites and 4 suites



COSIMO I SIZE	THEATRE	U SHAPE	BANQUETS
Length: m. 11,00			
Width: m. 9,30	85	30	60
Area: mq. 99,00			
Height: m. 3,20			

Technical Equipments

- Video projector • Screen (w. 2,95 x h. 2,45) • VHS overhead projector • DVD overhead projector • Illuminated board • Flip chart • Audio system • 3 radio microphones • Direct Dial Telephone • HDLS internet connection • Wi-Fi access • TV system

On Request

- Sound recordist and video operator • Simultaneous translation • Wireless Microphones • Wardrobe • Hostess service • Photographer • Computer

COSIMO II ROOM	THEATRE	U SHAPE
Length: m. 5,60		
Width: m. 4,80	20	15
Area: mq. 26,00		
Height: m. 3,00		

Technical Equipments

- Flip chart • Direct Dial Telephone • HDLS internet connection • Wi-Fi access

On Request

- Screen and Video projector • Simultaneous translation • Wardrobe • Hostess service • Photographer • Computer • Sound recordist and video operator